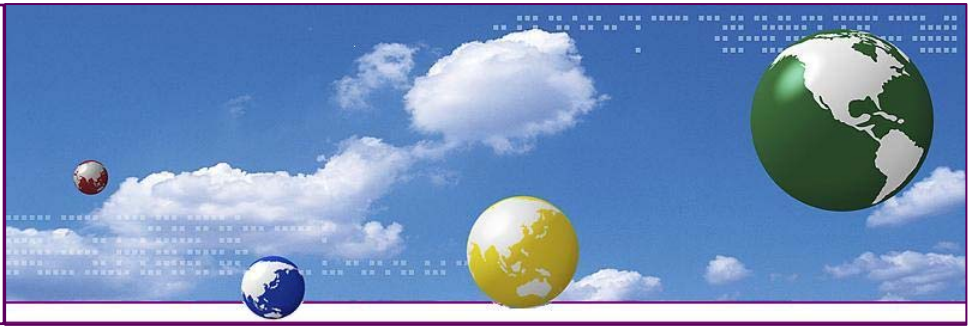


**LEGACY TOOLS & DATA
+ CIZER/MICROSOFT
BI TOOLS = OLD + NEW**

**A COST EFFECTIVE
NEW SOLUTION CAN
LEVERAGE YOUR OLD
INVESTMENTS WISELY.**



What pieces of the Microsoft Platform do you already own and can leverage in a new solution?

Microsoft Office today has approximately 400 million licensed users, and essentially provides a standard desktop toolset for Excel-oriented analysis in BI solutions. If an organization owns MS Office, they own the ability to use Excel in another product from Microsoft called Business Scorecard Manager.

It should be noted that Excel users can accomplish significant analytical tasks without ever implementing a BI solution per-say, but the value of Excel **analysis connected to a "one version of the truth" BI server is significant.**

What are the pieces you really need?

Another component of a Microsoft oriented BI solution is a portal – which essentially provides a browser window in which pieces such as:

- o Scorecards (Business Scorecard Manager for one)
- o Analytics (Excel Pivot-Tables and Pivot-Charts)
- o Reporting (Cizer.Net ad-hoc reporting) can be arranged.

The basic portal framework is known as Windows Sharepoint Services and is included free with Windows Sever 2003.

Thus an organization has choices about which tools to place in a Sharepoint Services portal – including custom-built in-house web-parts that might be authored by developers in the organization.

Cizer.Net Ad-Hoc Reporting as an example, uses the SQL Server Reporting Services (SSRS) that comes free with SQL Server 2005, where Cizer.Net extends the XML-based SSRS reporting capability into the BI Solution to work interactively with scorecards. **It helps users create "60 second reports"** to focus on organizational areas of concern highlighted in the scorecards.

It's important to realized that tool such as Cizer.Net do not introduce a new report format or proprietary file structures. **Cizer.Net is based on the XML "Report Definition Language"** (RDL) that is openly published by Microsoft. In fact, the resulting RDL reports can even be opened in NotePad – which proves to report analysts that they really do own the resulting reports.



**TAKE
CONTROL OF
ALL OF
YOUR DATA
RESOURCES
& PUT
THEM TO
WORK FOR
ALL OF
YOUR
PEOPLE**

**THAT'S
POWERFUL.**

